

OREGON CORNER RESTORATION FORM

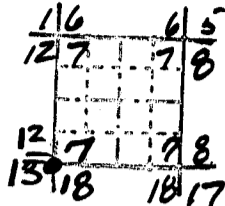
Section 7 Township 6S Range 8W

County Polk Date 2-28-86

Corner Designation

*Section Corner*

S.W. Cor. Sec. 7



- Condition Report Only
- Not Found
- Renewed
- Unrecorded
- Surveyed In
- Referenced Out

Previous Renewals/Surveys, etc. Set: Armstrong 1856, Caudle 1880, Fenton 1887, Maloney 1889, Hollingsworth (State Parks) 1967.

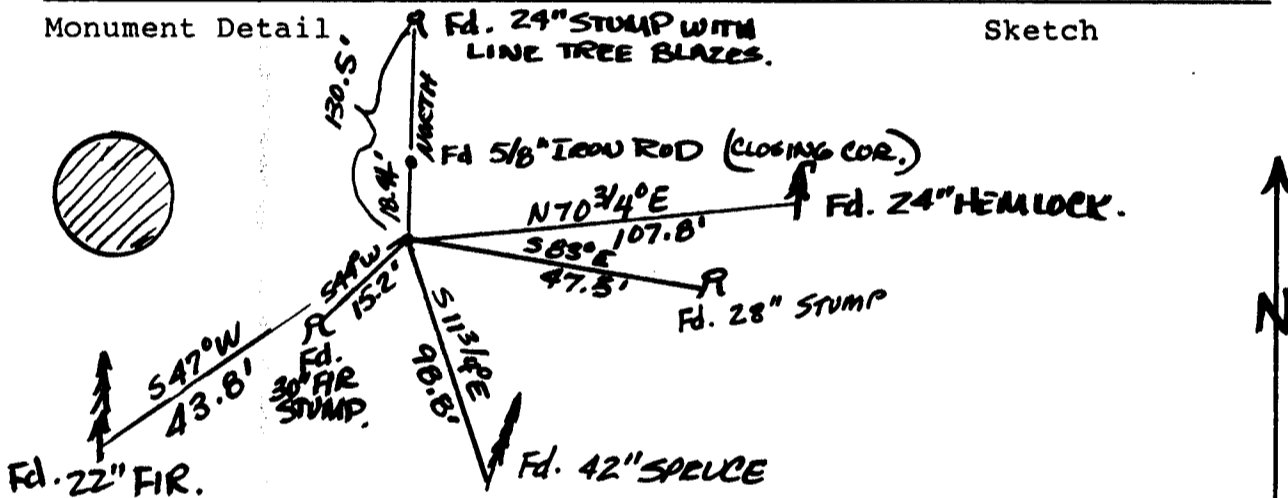
Monument(s) & Accessories Found: (Condition and Source)

- Fd: 5/8" iron rod.
- Fd: 18" hemlock (now 24") N 70°45'E-107.8', overgrown blaze.
- Fd: 28" stump, S 83°E-47.5' "1RBT" visible.
- Fd: 24" spruce (now 42"), S 11°45'E-98.8', overgrown blaze
- Fd: 30" fir stump, S 44°W-15.2', "BT" visible
- Fd: 10" fir (now 22"), S 47°W-43.8', overgrown blaze yellow tag
- Fd: 24" stump, north, 130.5', line tree notches visible
- Fd: 5/8" iron rod, north, 18.44', (closine corner 12/13)

Monument Detail

Fd. 24" STUMP WITH LINE TREE BLAZES.

Sketch



Monument Set (Procedures and Description)

None

New Accessories

Set: State Parks bearing tree tags on 24" hemlock and 42" spruce BT's.

Set: Orange carsonite post stenciled, "Sec Cor 7-18 T6S, R8W" 2' south.

Location & Comments

Surveyor's Seal

Compass Declination 20 1/2° E

Firm/Agency Oregon State Parks and Recreation Division

Address 525 Trade St. S.E.

Salem, OR 97310

Party Chief Kevin A. Thiel

Notes Kevin A. Thiel

Witness A. Slack

B. Bittner

H. Hanson

REGISTERED PROFESSIONAL LAND SURVEYOR

*John E. Hollingsworth*

OREGON JULY 9, 1968 JOHN E. HOLLINGSWORTH 691

17.